

Car Model
Old BMW E65

Navigation model
LVDS
INAVI X1, I-MERCURY
RGB
I-MERCURY A-CLASS
GI5000, GI8000
SMITHPAD ICUBE
WP9200, MYVI, QROI,
HDMI

OEM BUTTON



Buttons on the steering wheel

Mode Switch :
Press Long on the right steering wheel

OEM mode(rear camera image) PIP :
Press Long on the right steering wheel

RESET :
Press for 5 seconds on the left steering wheel

DIP S/W Setting



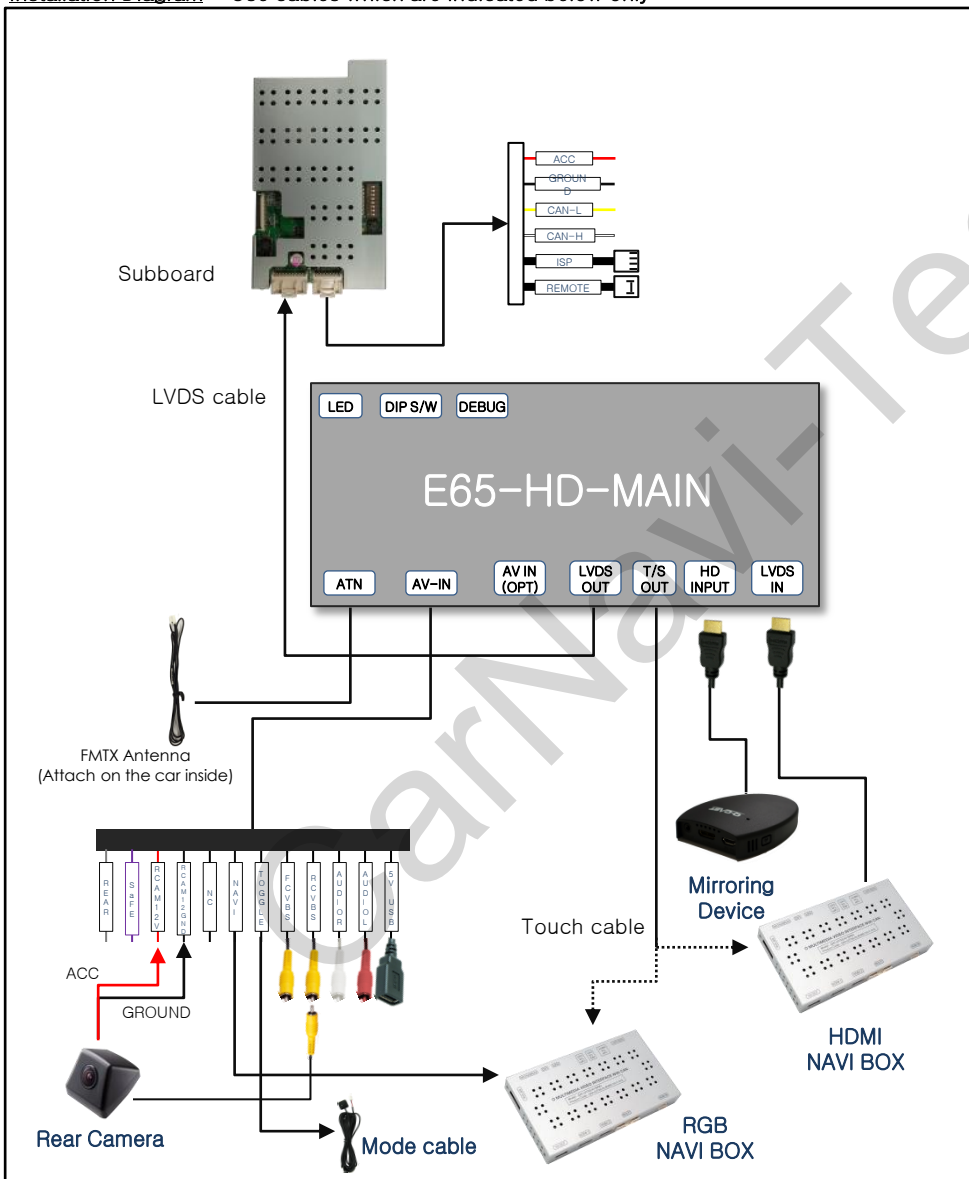
Monitor Dip S/W

#7 : OFF-OEM backup camera
ON-Aftermarket backup camera

Interface Dip S/W

#1 : OFF-Use RGB mode
ON-Skip RGB mode
#2 : OFF-Use LVDS mode
ON-Skip LVDS mode
3번 : OFF-USE A/V1 mode
ON-Skip A/V1 mode
4번 : OFF-Use A/V2 mode
ON-Skip A/V2 mode
<Caution> #5, #6, #7, #8 : OFF (No use)

Installation Diagram : Use cables which are indicated below only



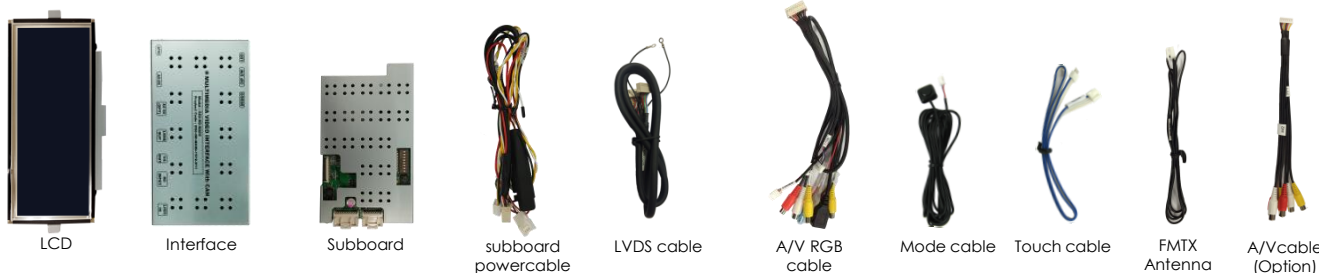
FAQ

- Q. Unable to switch the screen mode**
A. Check whether 1st LED on the interface is turned on
- Q. When OEM screen is not displayed**
A. Check Cables behind the monitor are properly connected. If it is not resolved, please contact the place of purchase

Remote Setting

Key	Function
POWER & PIP	N.C
MENU	Activate OSD Menu
OK	Choice, Mode switch
▲	Up
▼	Down
◀	Left (Enter the factory mode if press it for 2 seconds)
▶	Right (Activate factory reset if press it for 2 seconds)

Components



FACTORY MENU(Press Left button long on the remote)

※ Menu control by Remote

FACTORY E60 HD COMM	
PARK	PAS TYPE
UTIL1	PAS SETUP
UTIL2	REAR TYPE
INFO	SAFE ENABLE

PAS TYPE : Park Menu
 - NOT USED : Parking Guide Line OFF
 - PAS ON : Flexible Parking Guide line On
 - PAS OFF : Fixed Parking Guide line On
PAS SETUP : Parking Guide Line position
REAR TYPE : Method of Rear Camera Recognition
 (CAN type-Monitor OEM cable included)
SAFE ENABLE : If "ON", HDMI and AV modes will not be displayed while driving (factory setting : OFF)

FACTORY E60 HD COMM	
PARK	NAVI MODEL
UTIL1	AVOUT SEL
UTIL2	HDMI SKIP
INFO	FMTX ENABLE
	FMTX FREQUENCY

NAVI MODEL : Select Navigation model.
AVOUT SEL : Select AUX sound source (HDMI, AV1, AV2)
HDMI SKIP : Able to skip HDMI
FMTX ENABLE : FMTX ON/ OFF
FMTX FREQUENCY : FMTX Frequency Menu
 88.1MHz, 88.3MHz, 91.5MHz, 94.3MHz, 100.8MHz, 102.2MHz, 103.2MHz, 103.8MHz, 106.3MHz, 107.3MHz)

FACTORY E60 HD COMM	
PARK	BACK LIGHT
UTIL1	HANDLE KEY
UTIL2	FACTORY RESET
INFO	

BACK LIGHT : When the tail lamp is "ON", user is able to control the brightness of the Monitor
HANDLE KEY : Activate or deactivate the button on the steer wheel
FACTORY RESET : Activate FACTORY reset

FACTORY E60 HD COMM	
PARK	SYSTEM VERSION
UTIL1	(MAIN-130723)
UTIL2	
INFO	

INFO : Able to check the System Version

OSD MENU(Press "MENU" on a remote)

MENU of NAVI	
IMAGE	BRIGHTNESS
OSD	CONTRAST
UTIL	SHARPNESS

BRIGHTNESS
CONTRAST
SHARPNESS

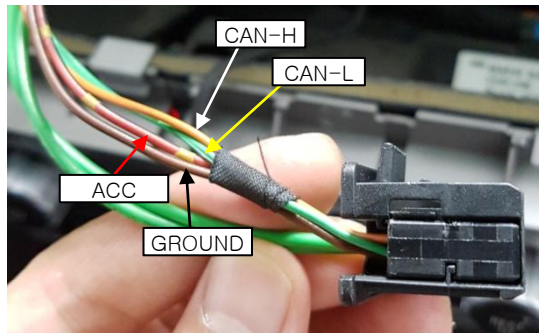
MENU of NAVI	
IMAGE	TRANS
OSD	H-POSITION
UTIL	V-POSITION

TRNAS : Adjust OSD Transparency.
H-POSITION : Move OSD horizontally
V-POSITION : Move OSD Vertically

MENU of NAVI	
IMAGE	FACTORY RESET
OSD	
UTIL	

FACTORY RESET : Activate OSD factory reset

CAN / ACC Connection

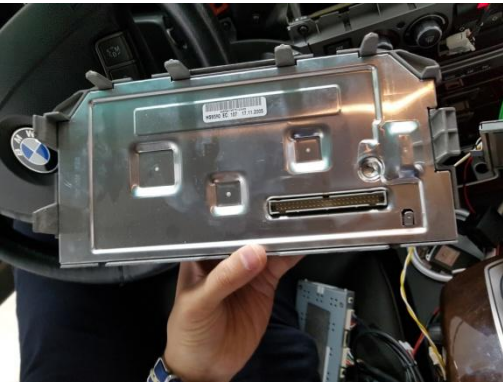


OEM cable

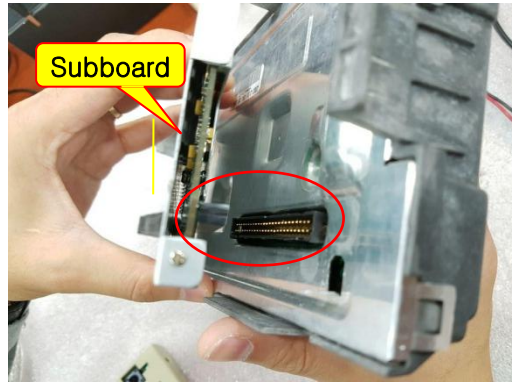
※ Find the black connector behind the monitor as shown above

Connect ACC(Red) wire of supplied power cable to ACC(Red+Yellow) wire of OEM power cable
 Connect Ground(Black) wire of supplied power cable to Ground(Brown) wire of OEM power cable
 Connect CAN-H(White) wire of supplied power cable to CAN-High(Orange) of OEM power cable
 Connect CAN-L(Yellow) wire of supplied power cable to CAN-Low(Green) of OEM power cable

LCD Connection



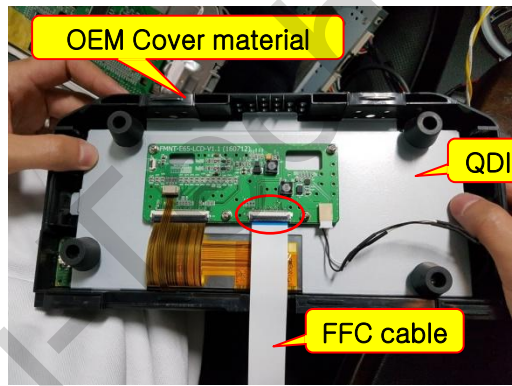
1. Disassemble the back of monitor as shown above



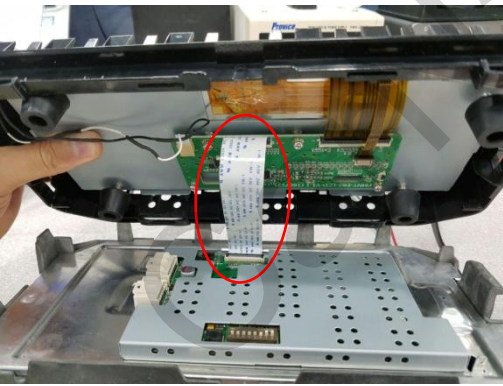
2. Connect subboard to the marked connector of the monitor



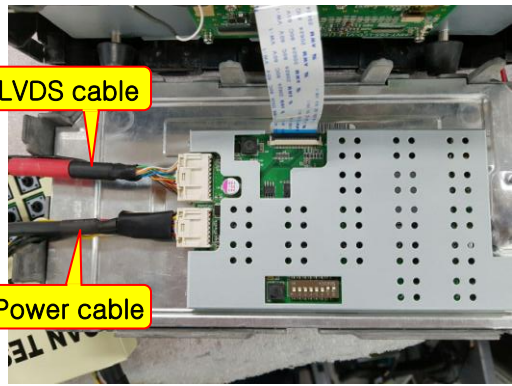
3. The attachment of two parts



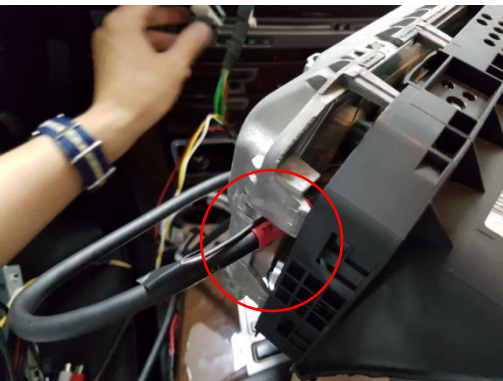
4. Remove the original LCD and it will be Replaced with QDIS's LCD. Connect FFC cable to the marked place



5. FFC cable shall be connected as above



6. Connect Power cable and LVDS cable as shown above



7. Take out cables through the marked place



8. Assemble the monitor as shown above