

LVDS cable connection

- 1 Pull out the connected original LVDS cable from the backside of monitor.
- 2 Connect the provided LVDS cable to LVDS OUT connector and connect the original LVDS cable to LVDS IN connector from the interface.
- 3 Connect the opposite side of the provided LVDS cable to the connector from the backside of monitor.

POWER cable connection

- 1 Pull out the bunch of cables from the backside of command as picture above and disconnect the market optical fiber cable.
- 2 Connect the provided optical fiber cable to the power cable.
- 3 Connect the provided power cable to the backside of monitor.
- 4 Connect the bunch of original cables to the provided power cable (Female connector)

Navigation, HDMI cable connection

Q-CAST HDMI * Power is supplied by USB port from AV cable.

AV Cable

- USB
- AUDIO OUT L
- AUDIO OUT R
- AUDIO IN L
- AUDIO IN R
- VIDEO IN
- FRONT CAMERA IN
- REAR CAMERA IN
- SAFE
- REPE
- F-CAM 12V
- F-CAM GND
- F-CAM TV

Original Button Usage

<LOW / 6.5">

<HIGH / 8.8">



- 1 : Long press – Change mode
- 2 : Short press – Select (FACTORY menu)
- 3 : Long press – FACTORY menu on Short press – Cancel (FACTORY menu)
- 4 : Long press – RESET (5 seconds)
- 5 : Long press – PIP Function on (HDMI, AV, Rear view)
- 6 : Rotate – menu (FACTORY menu)
- 7 : Short press – Front camera mode on (F-CAM ENABLE Required)



- 1 : Long press – Change mode
- 2 : Short press – Select (FACTORY MENU)
- 3 : Long press – FACTORY menu on Short press – Cancel (FACTORY menu)
- 4 : Long press – RESET (5 seconds)
- 5 : Long press – PIP Function on (HDMI, AV, Rear view)
- 6 : Rotate – menu (FACTORY menu)
- 7 : Short press – Front camera mode on (F-CAM ENABLE Required)

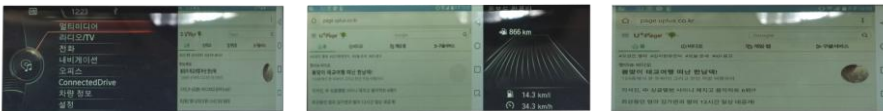
* All button shortly – back to original mode

* All button shortly – back to original mode

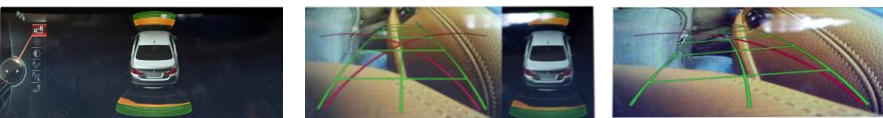


- 1 : Short press – Change mode (If no voice button, long press down button Short press – PIP Function on (Only on rear view mode))
- 2 : Short press – Change mode (#6 Mini)

External mode PIP (HDMI, AV Mode)



Rear view screen PIP (Rear view mode)



Components

INTERFACE POWER CABLE (HPOWER0113) LVDS CABLE (HLCDCA0035) MULTI CABLE (HAVCA0045) REAR CABLE (HARETC0002)

GUI Selection

* Set up Dip switch #6 On or off depending on models below.

- Rear view PDC -



Dip switch setting



PIN	Dip S/W Setting
1	ON : HDMI1 mode skip OFF : HDMI1 mode on
2	ON : HDMI2 mode skip OFF : HDMI2 mode on
3	ON : A/V mode skip OFF : A/V mode on
4	No use
5	ON : 6.5" monitor OFF : 8.8" or 10.2" monitor
6	ON : Normal GUI model OFF : Solid GUI model
7	ON : External rear view camera OFF : Original rear view camera
8	No use

* New X3, X4 : Dip #5, #6 ON

FACTORY Mode

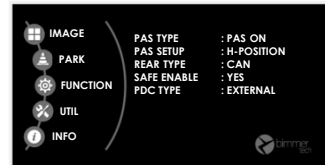
* Able to access by pressing longer Back button of I-DRIVE.

IMAGE



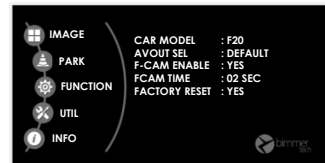
BRIGHTNESS : Control screen brightness
CONTRAST : Control screen contrast
SHARPNESS : Control screen sharpness

PARK



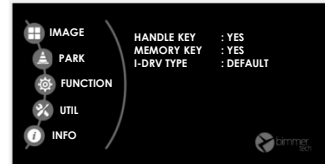
PAS TYPE : Select type of parking guide line
- NOT USED : No use parking guide line
- PAS ON : Selecting Dynamic parking guide line
- PAS OFF : Selecting fixed parking guide line
PAS SETUP : Adjusting the position of the parking guide line
REAR TYPE : Choose rear camera recognition
- LAMP / CAN
SAFE ENABLE : No video mode available while driving
PDC TYPE : Select type of PDC
- EXTERNAL : External camera installed without original
- HARMAN : Original PDC screen is located in middle

FUNCTION



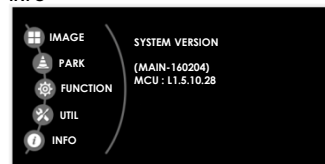
CAR MODEL : Select car model (F20 / F56)
AVOUT SEL : Selecting background sound
Original / LVDS mode - DEFAULT / HDMI / AV
F-CAM ENABLE : Front camera on
FCAM TIME : F-CAM play time
- 02 SEC ~ 10 SEC
FACTORY RESET : Reset FACTORY mode

UTIL



HANDLE KEY : Voice button from steering wheel on
MEMORY KEY : Memory #8 button on
I-DRV TYPE : I-DRIVE type
- HIGH (8.8") / LOW (6.5")

INFO



System version information.